

INDEX TO VOLUME 1, NUMBERS 1 AND 2

ARTICLES

- | | | |
|---|--|---|
| <p>Alanen, Arnold and Morrison, Darrel. <i>Editorial Commentary</i>, Number 1, page 1.</p> <p>Baxter, Victor. <i>CHACO/Pueblo Bonito: A Computer Analysis Applied to an Ancient Solar Dwelling</i>, 2, 85.</p> <p>Brown, Terry J. and Itami, Robert M. <i>Landscape Principles Study: Procedures for Landscape Assessment and Management—Australia</i>, 2, 113.</p> <p>Francis, Mark. <i>Behavioral Approaches and Issues in Landscape Architectural Education and Practice</i>, 2, 92.</p> <p>Fredericks, Regina B. <i>An Indexing Language for Landscape Architecture</i>, 1, 49.</p> | <p>Hightshoe, Gary L. and Niemann, Ronald S. <i>Plant Selection System (PLTSEL): Midwestern and Eastern Floristic Regions</i>, 1, 23.</p> <p>Howett, Catherine M. <i>Crying "Taste" in the Wilderness: The Disciples of Andrew Jackson Downing in Georgia</i>, 1, 15.</p> <p>Killpack, Charles. <i>Computer Mapping, Spatial Analysis, and Landscape Architecture</i>, 1, 41.</p> <p>Koh, Jusuck. <i>Ecological Design: A Post-Modern Design Paradigm of Holistic Philosophy and Evolutionary Ethic</i>, 2, 76.</p> <p>Kvashny, Alon. <i>Enhancing Creativity in Landscape Architectural Education</i>, 2, 104.</p> <p>Rodiek, Jon. <i>Wildlife Habitat Management and Landscape Architecture</i>, 1, 3.</p> | <p>Sandhu, Harjinder S. and Foster, John H. <i>Landscape Sensitive Planning: A Benefit/Cost Assessment</i>, 2, 67.</p> <p>Sheppard, Stephen R. J. <i>Predictive Landscape Portrayals: A Selective Research Review</i>, 1, 9.</p> <p>Stilgoe, John R. <i>The Railroad Beautiful: Landscape Architecture and the Railroad Gardening Movement, 1867–1930</i>, 2, 57.</p> <p>Zellie, Carole. <i>An Investigation of Nineteenth Century Surveyors and Land Planners in Massachusetts: 1830–1860</i>, 2, 96.</p> <p>Zube, Ervin H. <i>An Exploration of Southwestern Landscape Images</i>, 1, 31.</p> |
|---|--|---|

CONTRIBUTIONS TO LANDSCAPE JOURNAL

The editors welcome submissions of manuscripts and illustrations for consideration. All manuscripts are reviewed by at least two reviewers, after which authors are notified as to the paper's status: accepted, rejected, or recommended for revision and re-submission.

Three categories of papers are invited:

1. Specific research papers, wherein the context for the topic is addressed, the research process or methodology is documented, and results and conclusions are presented.

2. Reviews and/or critiques of areas of research related to landscape design, planning, and management, wherein a survey and discussion of current research are presented. Within this category, new annotated bibliographies would be considered.
3. Philosophical statements, theoretical discussions, and historic analyses based upon rigorous scholarly investigation and assessment of past and present activities, persons, and places related to landscape design, planning and management.

FOR GUIDELINES FOR PREPARATION OF MANUSCRIPTS AND ILLUSTRATIONS, SEND A SELF-ADDRESSED, STAMPED ENVELOPE TO:

The Editors
Landscape Journal
 25 Agriculture Hall
 University of Wisconsin
 Madison, Wisconsin 53706

FLOWERING PLANTS IN THE LANDSCAPE

MILDRED E. MATHIAS, Editor

Foreword by Sir George Taylor

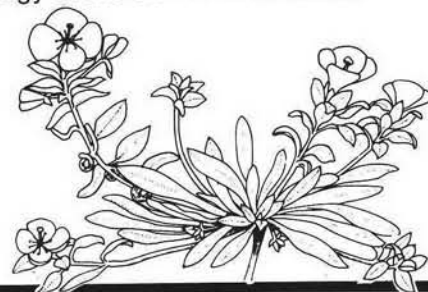
A selected treatment of flowering trees and shrubs, flowering vines and colorful ground covers that thrive in a variety of climates, many from faraway lands, with instructions for growing them. This is a new and revised edition of *Color for the Landscape* with additional cultural information, updated nomenclature, locations of fine specimens, and a selected bibliography. Although the book is designed primarily for the amateur gardener, it should also be extremely useful to the professional horticulturist, to the landscape architect, and to the traveler in subtropical and tropical regions. \$16.95, 205 color illustrations

SEASHORE PLANTS OF CALIFORNIA

E. YALE DAWSON and MICHAEL S. FOSTER

Combining and revising Dawson's *Seashore Plants of Northern California* and *Seashore Plants of Southern California*, this book is a guide to the marine vegetation of the entire coast written for the layman. Foster adds descriptions of more than sixty species not covered by Dawson. The over 240 plants now included reflect many taxonomical advances. Foster also offers the most current information on the role of marine plants in the ecology of the California coastal environment. \$14.95, 56 color illustrations, 66 line drawings

**UNIVERSITY OF
CALIFORNIA PRESS**
BERKELEY 94720



SCHOOL OF LANDSCAPE ARCHITECTURE GRADUATE PROGRAMS



The Master of Landscape Architecture program at Louisiana State University provides preparation for a professional career in landscape architecture.

The program is directed towards advanced study and specialization in design and research. Study tracks are offered for either a first professional degree or study beyond the accredited program degree.

L.S.U. is the center of academic research and advanced studies in Louisiana. The MLA program at Louisiana State University has been selected for The Southern Academic Common Market offering students from five southern states resident tuition. L.S.U. is located in the heart of Louisiana's rich historical, cultural, and natural landscape. Study opportunities are available to accommodate a range of individual student interests.

Assistantships and other financial aid are available to qualified applicants.

For further information contact: Joseph S. Popadic, Director
Graduate Studies in Landscape Architecture
School of Landscape Architecture
Louisiana State University
Baton Rouge, Louisiana 70803

Books from Wisconsin

THE PRAIRIE GARDEN

70 Native Plants You Can Grow in Town or Country

J. Robert Smith with Beatrice S. Smith. A complete guide for the professional and amateur, including color photographs and line drawings of all 70 plants. "If you are interested in establishing a meadow or prairie garden, this book is an excellent place to begin your research."
—*American Horticulturist*

232 pages, illus. 1980. Cloth \$22.50; paper \$9.95.

THE FOOL HEN

The Spruce Grouse on the Yellow Dog Plains

William L. Robinson. "Scholarly, lively and humane, this is the first monograph devoted to the tame but frequently elusive Spruce Grouse." —*American Birds*. "Robinson is a gifted writer who manages with apparent ease to bridge the gap between scientific and popular style." —*Journal of Wildlife Management*

224 pages, color illus. 1980. Cloth \$18.50.

THE LEGUMINOSAE

A Source Book of Characteristics, Uses, and Nodulation

O. N. Allen and Ethel K. Allen. This encyclopedic global survey of leguminous root nodulation, the result of 45 years of research, is the only one of its kind, a massive effort incorporating all of the 750 known genera of Leguminosae, which include nearly 20,000 species. Truly a magnificent achievement.

880 pages, illus. 1981. Cloth \$60.00.

OUR NATIONAL PARKS

John Muir. A guidebook supreme, an exciting introduction to Yosemite and several other magnificent parks by the man who, more than any other person, helped to create them. Originally published in 1901 and long out of print, Wisconsin has now made another Muir classic available in a popular paperback edition.

416 pages, illus. 1981. Cloth \$25.00; paper \$6.95.



The University of Wisconsin Press

114 North Murray Street, Madison, Wisconsin 53715

More Than 6,000 Landscape Architects Now Enrich Their Professional Careers Through ASLA.



(Isn't it time you put
ASLA to work for you too?)

Enrich your professional career with an individual membership in the American Society of Landscape Architects.

Nowhere else can you obtain special products and services created solely for the landscape architect. And nowhere else can you support representation for the profession as a whole than through ASLA.

Every landscape architect who joins ASLA adds substantial strength to the profession as a unified force. Every ASLA member in turn receives numerous direct benefits of ASLA membership.

Use the coupon at right to discover how you can put ASLA to work for you.

Yes. Please send me free information on how I can enrich my career through membership in the American Society of Landscape Architects.

Name _____

Address _____

City _____ State _____ Zip _____

Return Coupon to ASLA, Director of Membership,
1733 Connecticut Avenue, Wash., D.C. 20009



**SIX THOUSAND STRONG
AND GROWING STRONGER.**

Common Landscape of America, 1580 to 1845

John R. Stilgoe

Between 1580, when Spanish settlers began shaping our land, and 1845, when rapid urbanization dramatically altered the environment, the structures and spaces created by Americans were governed by common design, understood by all and passed from generation to generation. Stilgoe's beautifully written account of the remaining vestiges of this man-made landscape reveals how it objectified American cultural traits of that era.

"An **important exploration** of an aspect of American culture that has been too long neglected: the evolution of the man-made environment of the United States.... Gracefully written.... Students and laymen alike will learn through this remarkable book to see the American landscape with greater discernment and a deeper affection."—J.B. Jackson 30 illus. \$29.95



Yale University Press New Haven and London

Airmail Service is now available to LANDSCAPE JOURNAL foreign subscribers who wish to receive their issues quickly.

Regular foreign subscription rates allow only surface shipment, and issues delivered to foreign countries may arrive 3-9 weeks after publication.

Airmail Service will insure that issues are sent First Class Air to arrive within a few days.

The service is \$7.00/year in addition to the regular foreign subscription rate, and covers all postage and handling.

Subscribers may request the service for their next issue; first-time subscribers and renewals may also elect the service.

Remit in U.S. funds. Individuals must prepay. Make checks and money orders payable to: Journals, The University of Wisconsin Press.

Reply to: Journal Division

The University of Wisconsin Press
114 North Murray Street
Madison, Wisconsin 53715
U.S.A.

If you already subscribe, please send the mailing label from the journal. Otherwise, include full information including name and address, subscription status, and the title of the journal.

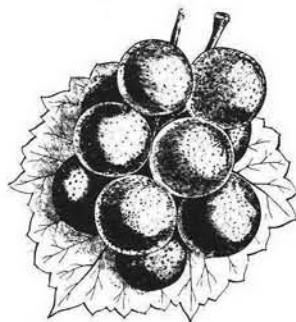
NEW FROM

Duke UNIVERSITY
PRESS

SCUPPERNONG

NORTH CAROLINA'S GRAPE AND ITS WINES

Clarence Gohdes



"Clarence Gohdes's book is a pleasure to read; I was enchanted by it. It is packed with delightful accounts of history and nature and demonstrates what a gifted writer can do when he turns his attention to a new topic of unusual interest."

William S. Powell, UNC—Chapel Hill

A distinguished Duke University professor has written the first history of the earliest important native wine grape of the United States. Beginning in 1811, Gohdes traces Scuppernong's history through the nineteenth century, Prohibition, and evaluates the present national wine boom and its impact on the Scuppernong of North Carolina.

Illustrations, \$14.95

SOUTHERN GARDENS, SOUTHERN GARDENING

William Lanier Hunt

Foreword by Elizabeth Lawrence, author of A Southern Garden

"This is a book that has long been looked for and which will be welcomed with delight; it touches upon just about everything in the South and in England, and does not neglect the Yankees."

Elizabeth Lawrence

Hunt is the leading authority writing today on Southern gardens. His historical knowledge, deep appreciation of gardening in all its aspects, and first-hand experience of all the South, make this collection of his best writings a valuable and practical source for every Southern gardener and an equal delight for armchair gardeners. Although not specifically a how-to book, *Southern Gardens, Southern Gardening*, arranged by months of the year, is filled with useful, common-sense instructions, as well as the wisdom and art of gardening.

Illustrations, \$16.50

DUKE UNIVERSITY PRESS

6697 College Station / Durham, North Carolina 27708

GRADUATE STUDIES IN LANDSCAPE ARCHITECTURE AT THE UNIVERSITY OF WISCONSIN—MADISON

BACKGROUND

The Department of Landscape Architecture is located on the campus of the University of Wisconsin—Madison. The graduate student in Landscape Architecture has access to a wide range of facilities and scholars from nearly every discipline, reflecting the University of Wisconsin—Madison's worldwide reputation for educational quality.

Some 3700 courses are offered by more than 125 departments located on the Madison campus. Students may take advantage of campus libraries, containing more than 3.3 million volumes; the resources of the State Historical Society of Wisconsin; the facilities of the Madison Area Computer Center with its unique computing facilities specially designed for problems in landscape planning, design, and management; the outdoor laboratory of the University Arboretum; the collections of the Elvehjem Museum of Art; and the resources of Wisconsin State Government.

The UW-Madison is in central Madison, Wisconsin's capital city, and overlooks Lake Mendota. Opportunities abound, both organized and informal, for outdoor recreational activities as well as numerous cultural events offered by the University of Wisconsin—Madison.

FOCUS AREAS

The graduate program in Landscape Architecture is based on the premise that research and teaching at the graduate level should generate and synthesize new information for the purpose of raising the level of performance in landscape planning, management, and design. To do so, the graduate program in Landscape Architecture is organized into six research and teaching focus areas. These areas are as follows:

- *Cultural Resource Preservation and Landscape History*
- *Plant Community Assessment, Management, and Restoration*
- *Land Information Policies, Uses, and Management*
- *Human Perception and Behavior in the Landscape*
- *Design and Planning Processes*
- *Emerging and Exploratory Issues*

FACULTY AND STAFF

One of the unique features of the UW-Madison Department of Landscape Architecture is the varied disciplinary background of the faculty and staff. The faculty represent a wide range of disciplines in the design professions, social sciences, biological sciences, and humanities. In addition, many students and faculty work with persons in other University departments, thereby ensuring a high level of contact and working relationships with many research areas and disciplines.

FURTHER INFORMATION:

Graduate Admissions Committee
Department of Landscape Architecture
25 Agriculture Hall
University of Wisconsin
Madison, WI 53706

BUILDING^{AN}ARK

TOOLS FOR THE PRESERVATION OF NATURAL DIVERSITY THROUGH LAND PROTECTION

PHILLIP M. HOOSE
Director of Preserve Selection and Design
THE NATURE CONSERVANCY

Pocket Flora of the Redwood Forest

Dr. Rudolf W. Becking

Two of a kind.

For everyone who savors the land and its precious plant communities, these two books from Island Press are essential.

Precious land and species can be preserved without penalty to landowners and without millions of dollars changing hands. This is the message of **Building an Ark**, the essential guidebook that documents 14 options to land purchase now being used in ecological conservation programs throughout the nation. Phillip M. Hoose, Director of Preserve Selection and Design for The Nature Conservancy, sets forth an urgent goal: to preserve at least one viable population of every plant and animal species in the United States. **Building an Ark** shows how it can be done.

Building an Ark: Tools for the Preservation of Natural Diversity Through Land Protection by Phillip M. Hoose Trade Paperback 221 pages bibliography/appendices \$12.00 ISBN: 0-933280-09-2

There's only one place on earth where coastal redwood trees flourish, and there's only one comprehensive guide to this unique forest community. **Pocket Flora of the Redwood Forest** presents 212 of the plants of this forest habitat, in detailed black-and-white drawings and 30 superb color plates. Dr. Rudolf W. Becking, a noted authority on redwoods and Professor of Natural Resources at Humboldt State University, has provided an indispensable field guide for all who visit or simply treasure the redwood forest.

Pocket Flora of the Redwood Forest by Dr. Rudolf W. Becking Trade paperback: plasticized cover for field use. 256 pages 212 b&w drawings. 30 color plates \$15.00 ISBN: 0-933280-02-5

Send your order, with payment, to Island Press, Dept. LJ, Star Route 1, Box 38, Covelo, CA 95428. California residents, add 6½% for sales tax. Send \$1.00 additional for postage and handling. Order *both* titles and Island Press will pay the shipping charges!

ISLAND PRESS

LAND ECONOMICS

Founded: 1925

Editor: Daniel W. Bromley

... explores the relationship between economics and natural and environmental resources, emphasizing conceptual and/or empirical work relevant to public policy. Contributors include scholars and researchers in the fields of natural resource economics, conservation and pollution, public finance, regional economics, land reform, transportation, industrial organization, and agricultural policy. The "Comment and Reply" section serves as a forum for debate and discussion of articles. Readers are kept informed of major publications with reviews and a current list of published books.

ISSN 0023-7639

Published quarterly by The University of Wisconsin Press

Subscribe now, or recommend a subscription to your library.
A detailed brochure will be sent upon request.

RATES

Individuals: \$20/yr.
(must prepay)
Institutions: \$35/yr.
Foreign subscribers add \$3/yr.
for regular postage, or \$12.50/yr.
for Airmail delivery.

REPLY TO

Journal Division
The University of Wisconsin
Press
114 North Murray Street
Madison, Wisconsin 53715
USA
(608) 262-4952



the second midwest PRAIRIE CONFERENCE

Madison, Wisconsin

September 18, 19, 20, 1970

CONTENTS

HIGHLIGHTS:

Original and relic
prairies of the
Midwest states and
Plains, with maps

Studies of
soil water,
spiders,
soil arthropods,
mammals and fire,
P and N relationships,
six restorations.

Prairie uses,
protection, and
education

The story of
Goose Lake and
Chiwaukee
Prairies

Index of
Participants

242 pp.

Conference held at the Madison Campus and Arboretum and Kenosha Parkside Campus of the University of Wisconsin.

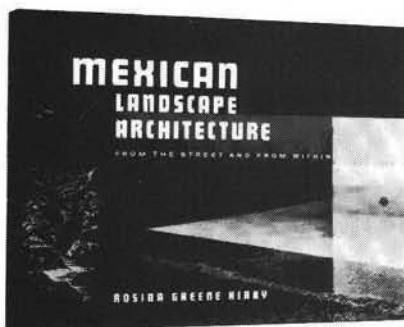
Proceedings, 1972, reprinted with the original illustrations by wildlife artist Elizabeth Hollister.

Available at \$8.50 postpaid from: **James H. Zimmerman**
2114 Van Hise Avenue
Madison, WI 53705
608 233-5433

(Discount on quantities)

Consulting Ecologist
Natural Ecosystem
Restoration, Management
Environmental
Troubleshooting

BORDERLAND BEAUTY

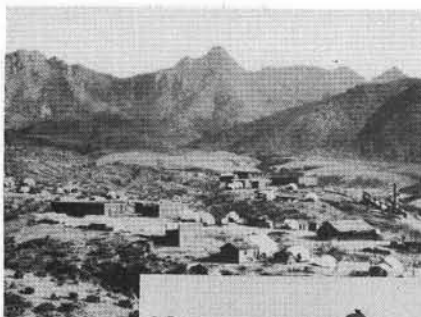


Mexican Landscape Architecture

*From the Street
and From Within*

by Rosina G. Kirby

From the grandeur of the Aztecs to the tranquility of modern patios, 600 years of a unique architectural style are covered in this handsome volume. "The text of the book is compact and sensible, but it is the photographs which carry most of the message" (*Architectural World*). "A truly exquisite book about the art of creating a satisfying man-made environment" (*Choice*). "This book is not one of those that would stay on the table unopened for long" (*Mexican World*). 167 pp. (12x9), 1972. \$27.50 cloth.



Now back in print!

"a superb ecological study" (*American Scientist*)

The Changing Mile

by James R. Hastings & Raymond Turner

Anyone who thinks of the desert as Nature at her least dynamic will be surprised and fascinated by this unique study. "Vividly illustrated in matching photographs are the changes brought about on the desert [over] 85 years. Having acquired 97 photos of the Southwest taken in the 1880s, the authors proceeded to rephotograph the same terrain from exactly the same vantage points.... You will be astonished at differences—not only in flora, but in some cases thriving mining communities are now barren waste" (*Desert Magazine*). 317 pp. (9 x 12), 1965. \$18.00 cloth.




Arizona's Natural Environment

Landscapes and Habitats

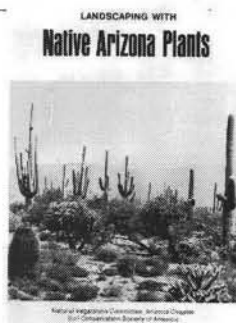
by Charles H. Lowe, Jr.

A panoramic overview of the state's life zones, sequence of biotic communities and zones, biomes, biotic provinces, faunal areas, floristic elements, aquatic habitats—plus ecologic check list. Excerpted from *The Vertebrates of Arizona*. 136 pp., 1972. \$3.95 paper.

 **University of Arizona Press**
Box 3698, Tucson, Arizona 85722

Landscaping with Native Arizona Plants

by Ervin M. Schmutz



"This straightforward book, conceived for a diverse audience, is particularly important because it suggests rational ways of choosing new plants to suit a variety of surrounding native landscapes. Following its guidance should result in both better design solutions and cultural success" (*Journal of Range Management*). 194 pp., 1973. \$9.95 paper.

For those wishing to understand better the character of small town traditions and landscapes

ORDER AND IMAGE IN THE AMERICAN Small Town

Edited by Michael W. Fazio and Peggy W. Prenshaw

Introduction by James F. Barker These 15 original essays explore such problems as preserving the legacy of small towns while promoting progress and economic development

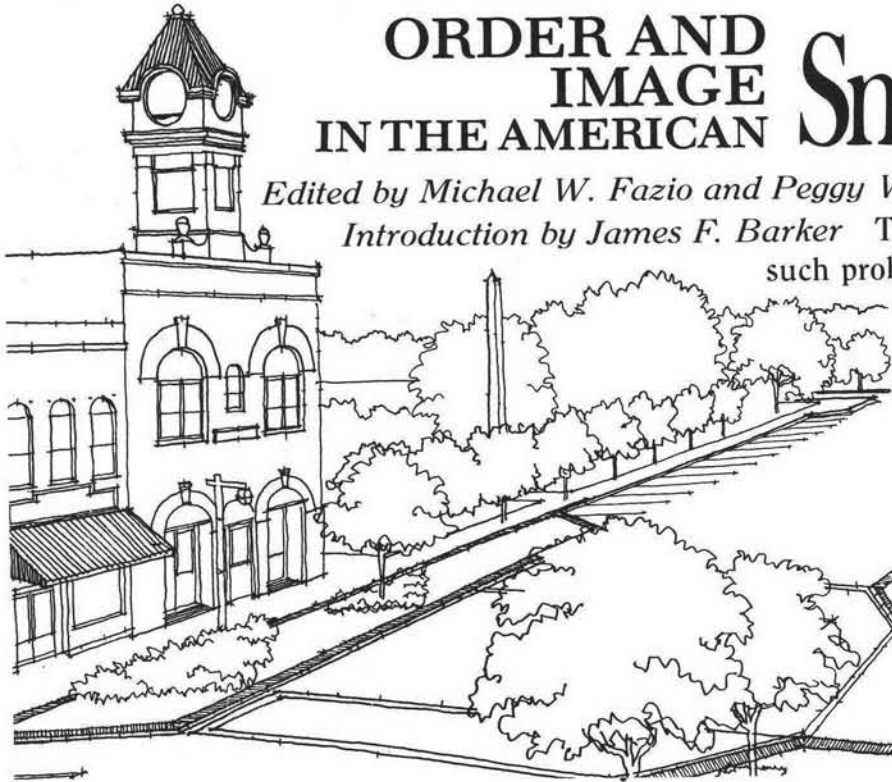
200 pages, illustrated

\$12.50

Visa or MasterCard accepted



University Press of Mississippi
3825 Ridgewood Road
Jackson, MS 39211



GRADUATE STUDY OPPORTUNITY IN LANDSCAPE ARCHITECTURE AT THE UNIVERSITY OF VIRGINIA

Particularly designed for those with academic backgrounds in the

LIBERAL ARTS,
SCIENCES or
FINE ARTS

Ours is a 3-year fully accredited professional Master's Degree Program. Our purpose is to prepare students from diverse academic backgrounds for entry into the profession and eventual leadership in the field. A limited number of openings with advanced standing are available for students with professional degree backgrounds in architecture and landscape architecture.

For an application and graduate catalog write:

Division of Landscape Architecture
School of Architecture
Campbell Hall
University of Virginia
Charlottesville, Virginia 22903

For further information call: 804 924-3957