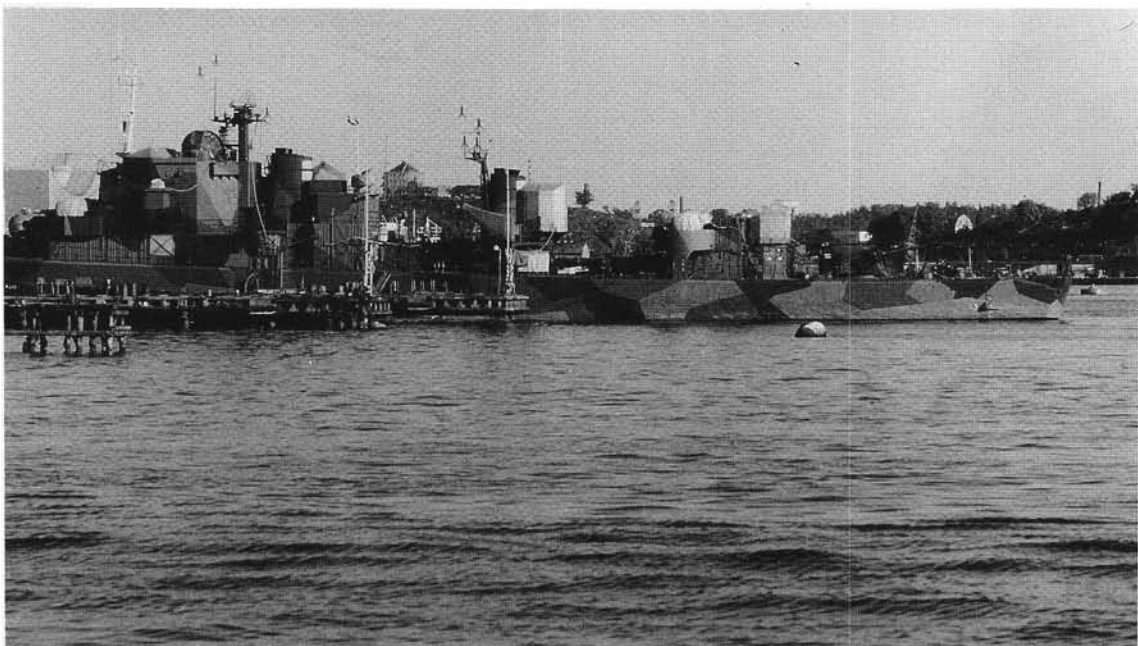

LANDSCAPE JOURNAL

Design, planning and management of the land

Volume 12, Number 2, Fall 1993



LANDSCAPE JOURNAL

Design, planning and management of the land

Volume 12, Number 2, Fall 1993

COUNCIL OF
EDUCATORS
IN
LANDSCAPE
ARCHITECTURE

THE
UNIVERSITY
OF
WISCONSIN
PRESS

LANDSCAPE JOURNAL

Design, planning and management of the land

A journal of the Council of Educators in Landscape Architecture, edited at the Department of Landscape Architecture, University of Illinois and published by the University of Wisconsin Press.

Editor	Robert B. Riley, <i>University of Illinois—Urbana Champaign</i>
Consulting Editor	Arnold Alanen, <i>University of Wisconsin—Madison</i>
Book Review Editors	Noël Dorsey Vernon, <i>California State University—Pomona</i> Bob Scarfo, <i>University of Maryland</i>
Assistant Editor	Brenda Brown, <i>University of Illinois—Urbana Champaign</i>
Editorial Board	Clare Cooper-Marcus, <i>University of California—Berkeley</i> Peter Jacobs, <i>University of Montreal</i> Grant Jones, <i>Jones and Jones, Seattle, Washington</i> Robert Leopold, <i>Bureau of Land Management, Denver, Colorado</i> Michael M. McCarthy, <i>Texas A & M University</i> Darrel Morrison, <i>University of Georgia</i> Dusan Ogrin, <i>University of Ljubljana, Slovenia</i> Olav R. Skage, <i>Swedish University of Agricultural Sciences</i> Frederick Steiner, <i>Arizona State University</i> Richard Stiles, <i>University of Manchester, England</i> Joanne M. Westphal, <i>Michigan State University</i> Ervin Zube, <i>University of Arizona</i>
Ex officio	Arthur Rice, <i>President, Council of Educators in Landscape Architecture</i> William Swain, <i>Fellow, American Society of Landscape Architects</i>

EDITORIAL OFFICE: Department of Landscape Architecture, University of Illinois, Urbana, Illinois 61801. The editors invite the submission of manuscripts reporting results of research and scholarly investigation relating to landscape design, planning, and management. Submission of a paper to Landscape Journal implies that it has neither been published elsewhere nor is under consideration by another periodical. For complete guidelines regarding preparation of manuscripts and illustrations, contact the editors at the editorial office address. Enclose a self-addressed, stamped envelope.

BUSINESS OFFICE: All correspondence about advertising, subscriptions, and allied matters should be sent to: Journal Division, The University of Wisconsin Press, 114 N. Murray St., Madison, WI 53715.

LANDSCAPE JOURNAL is published twice yearly by the University of Wisconsin Press.

© 1993 by the Board of Regents of the University of Wisconsin System.

Authorization to photocopy items for internal or personal use, or the internal or personal use of specific clients, is granted by the Board of Regents of the University of Wisconsin System for libraries and other users registered with the Copyright Clearance Center (CCC) Transactional Reporting Service, provided that the base fee of \$1.50 per copy is paid directly to CCC, 21 Congress St., Salem, MA 01970. 0277-2426/0003-091 \$1.50/0

Postage paid at Madison, Wisconsin, and at additional mailing offices.

SUBSCRIPTION RATE: One year: \$55.00 businesses, libraries, government agencies, and public institutions; \$24.00 individuals (individuals must prepay); foreign subscribers (including Canada and Mexico) add \$8.00 per year or for Air Mail Service add \$11.00 per year.

US ISSN 0277-2426
