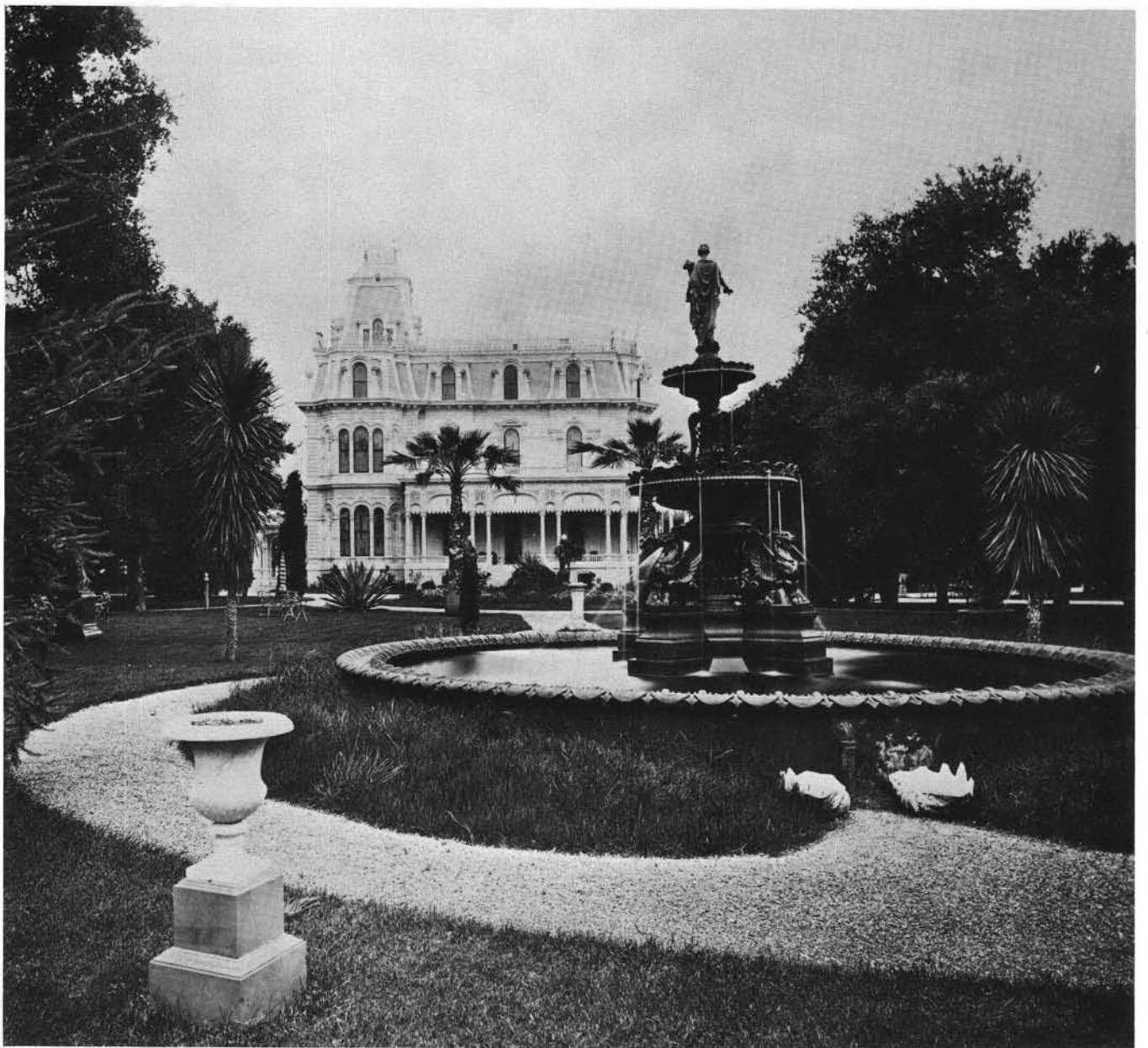

LANDSCAPE JOURNAL

Design, planning and management of the land

Volume 4, Number 2, Fall 1985



LANDSCAPE JOURNAL

Design, planning and management of the land

Volume 4, Number 2, Fall 1985

THE
UNIVERSITY
OF
WISCONSIN
PRESS

LANDSCAPE JOURNAL

Design, planning and management of the land

Edited at the Department of Landscape Architecture, University of Wisconsin-Madison and School of Environmental Design, University of Georgia, in cooperation with the Council of Educators in Landscape Architecture (CELA) and published by the University of Wisconsin Press.

Editors	Arnold Alanen, University of Wisconsin-Madison Darrel Morrison, University of Georgia
Book Review Editor	Catherine M. Howett, University of Georgia
Editorial Assistants	Carol Ahlgren, University of Wisconsin Frank E. Martin, University of Wisconsin
Editorial Board	Claris Ingersoll, University of Georgia Clare Cooper-Marcus, <i>University of California-Berkeley</i> Alan Gussow, <i>Congers, New York</i> Peter Jacobs, <i>University of Montreal</i> Grant Jones, <i>Jones and Jones, Seattle, Washington</i> Robert Leopold, <i>Bureau of Land Management, Denver</i> Michael M. McCarthy, <i>University of Melbourne, Australia</i> Bernard J. Niemann, <i>University of Wisconsin</i> Sally Schauman, <i>University of Washington</i> Carl Steinitz, <i>Harvard University</i> Ervin Zube, <i>University of Arizona</i>
Ex officio	Robert Riley, <i>President, Council of Educators in Landscape Architecture</i> William Swain, <i>Fellow, American Society of Landscape Architects</i>

EDITORIAL OFFICE: School of Environmental Design, 609 Caldwell Hall, University of Georgia, Atlanta, GA 30602. The editors invite the submission of manuscripts reporting results of research and scholarly investigation relating to landscape design, planning, and management. Submission of a paper to *Landscape Journal* implies that it has neither been published elsewhere nor is under consideration by another periodical. For complete guidelines regarding preparation of manuscripts and illustrations, contact the editors at the editorial office address. Enclose a self-addressed, stamped envelope.

BUSINESS OFFICE: All correspondence about advertising, subscriptions, and allied matters should be sent to: Journal Division, The University of Wisconsin Press, 114 N. Murray St., Madison, WI 53715.

LANDSCAPE JOURNAL is published twice yearly by The University of Wisconsin Press.

© 1985 by the Board of Regents of the University of Wisconsin System.

The code at the bottom of the first page of an article indicates consent to make copies for personal or internal use, or for that of specific clients on the condition that the copier pay the stated per-copy fee through the Copyright Clearance Center, Inc. for copying beyond that permitted by Section 107 or 108 of the U.S. Copyright Law. It does not extend to other kinds of copying, as for general distribution, advertising, promotion, for creating new collective works, or for resale.

Postage paid at Madison, Wisconsin, and at additional mailing offices.

SUBSCRIPTION RATE: One year: \$35.00 businesses, libraries, government agencies, and public institutions; \$15.00 individuals (individuals must prepay); foreign subscribers (including Canada and Mexico) and \$5.50 per year or for Air Mail Service add \$11.00 per year.

US ISSN 0277-2426

CONTRIBUTIONS TO *LANDSCAPE JOURNAL*

The editors welcome submissions of manuscripts and illustrations for consideration. All manuscripts are reviewed by at least two reviewers, after which authors are notified as to the paper's status: accepted, rejected, or recommended for revision and re-submission.

Three categories of papers are invited:

1. Specific research papers, wherein the context for the topic is addressed, the research process or methodology is documented, and results and conclusions are presented.
2. Reviews and/or critiques of areas of research related to landscape design, planning, and management, wherein a survey and discussion of current research are presented. Within this category, new annotated bibliographies would be considered.
3. Philosophical statements, theoretical discussions, and historic analyses based upon rigorous scholarly investigation and assessment of past and present activities, persons, and places related to landscape design, planning, and management.

FOR GUIDELINES REGARDING PREPARATION OF MANUSCRIPTS AND ILLUSTRATIONS, SEND A SELF-ADDRESSED, STAMPED ENVELOPE TO:

The Editors
Landscape Journal
609 Caldwell Hall
School of Environmental
Design
University of Georgia
Athens, Georgia 30602

REVIEWERS FOR *LANDSCAPE JOURNAL*

The following individuals, in addition to the Co-editors of *Landscape Journal*, provided judgment and advice on manuscripts between March 1, 1984 and March 1, 1985. Any omission of a reviewer's name is strictly unintentional.

William Beiswanger
Vincent Bellafiore
Brooks Breedon
Richard Chenoweth
Donald Crawford
Dennis Dingemans
Julius Gy. Fabos
Albert Fein
Herman Felstehausen
Bruce K. Ferguson
Ian Firth
Richard Francaviglia
Mark Francis
Paul Gobster
Robert Grese
C. Gustav Hard
Thomas A. Heberlein
Randy Hester
Catherine Howett
Boyd A. Hutchison

Wayne D. Iverson
Peter Jacobs
Rachel Kaplan
Stephen Kaplan
Alon Kvashny
Jonathan Lu
John T. Lyle
Robert Z. Melnick
Patrick Miller
Louise Mudrak
Joan Nassauer
Darwina Neal
Peter J. Olin
David G. Pitt
Reuben M. Rainey
Karl Raitz
Jon E. Rodiek

Christopher Salter
Fahriye Sancar
Hamid Shirvani
Kenard E. Smith
John R. Stilgoe
David C. Streatfield
Frederick R. Steiner
Carl Steinitz
Steven Strom
Anne W. Spirn
Charles H. Thomsen
Yi-Fu Tuan
Suzanne L. Turner
Thomas Vale
J. Alan Wagar
Donald P. Werling
Eugene Wilkening
Leo Zonn
Ervin H. Zube