

---

# LANDSCAPE JOURNAL

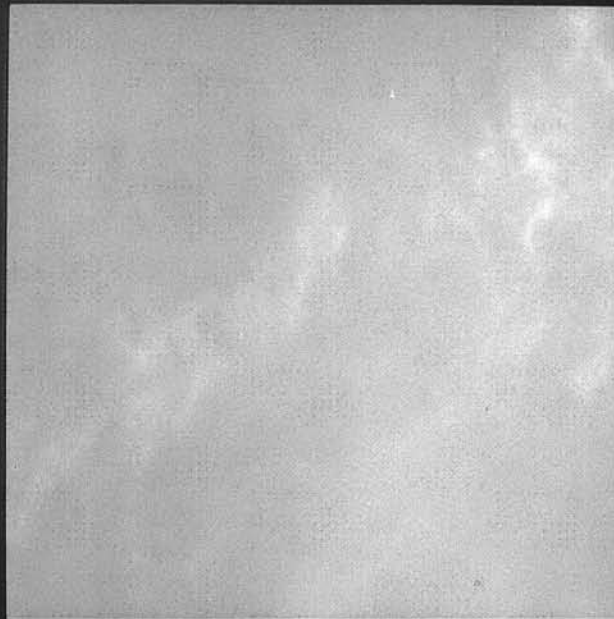
Special Issue: Nature, Form, and Meaning

---

Design, planning and management of the land

*Volume 7, Number 2, Fall 1988*

---



---

# LANDSCAPE JOURNAL

---

Design, planning and management of the land

*Volume 7, Number 2, Fall 1988*

---

---

THE  
UNIVERSITY  
OF  
WISCONSIN  
PRESS

---

---

# LANDSCAPE JOURNAL

---

Design, planning and management of the land

---

Edited at the School of Environmental Design, University of Georgia and Department of Landscape Architecture, University of Wisconsin-Madison in cooperation with the Council of Educators in Landscape Architecture (CELA) and published by the University of Wisconsin Press.

---

Editors

Arnold Alanen, University of Wisconsin-Madison  
Darrel Morrison, University of Georgia  
Noël Dorsey Vernon, Ball State University  
Claris Ingersoll, University of Georgia

Book Review Editor  
Editorial Assistant

Editorial Board

Clare Cooper-Marcus, *University of California-Berkeley*  
Peter Jacobs, *University of Montreal*  
Grant Jones, *Jones and Jones, Seattle, Washington*  
Robert Leopold, *Bureau of Land Management, Denver*  
Michael M. McCarthy, *Texas A and M University*  
Robert Riley, *University of Illinois*  
Frederick Steiner, *University of Colorado-Denver*  
Joanne M. Westphal, *Michigan State University*  
Ervin Zube, *University of Arizona*

Ex officio

Sue Weideman, *President, Council of Educators in Landscape Architecture*  
William Swain, *Fellow, American Society of Landscape Architects*

---

EDITORIAL OFFICE: Robert B. Riley, Department of Landscape Architecture, 214 Mumford Hall, University of Illinois, Urbana, IL 61801. The editors invite the submission of manuscripts reporting results of research and scholarly investigation relating to landscape design, planning, and management. Submission of a paper to *Landscape Journal* implies that it has neither been published elsewhere nor is under consideration by another periodical. For complete guidelines regarding preparation of manuscripts and illustrations, contact the editors at the editorial office address. Enclose a self-addressed, stamped envelope.

BUSINESS OFFICE: All correspondence about advertising, subscriptions, and allied matters should be sent to: Journal Division, The University of Wisconsin Press, 114 N. Murray St., Madison, WI 53715.

LANDSCAPE JOURNAL is published twice yearly by The University of Wisconsin Press.

© 1988 by the Board of Regents of the University of Wisconsin System.

Authorization to photocopy items for internal or personal use, or the internal or personal use of specific clients, is granted by the Board of Regents of the University of Wisconsin System for libraries and other users registered with the Copyright Clearance Center (CCC) Transactional Reporting Service, provided that the base fee of \$1.50 per copy is paid directly to CCC, 21 Congress St., Salem, MA 01970. 0277-2426/84/0003-091 \$1.50/0

Postage paid at Madison, Wisconsin, and at additional mailing offices.

SUBSCRIPTION RATE: One year: \$40.00 businesses, libraries, government agencies, and public institutions; \$18.00 individuals (individuals must prepay); foreign subscribers (including Canada and Mexico) add \$8.00 per year or for Air Mail Service add \$11.00 per year.

US ISSN 0277-2426

---

---

SPECIAL ISSUE:  
NATURE, FORM, AND MEANING

---

---

# SPECIAL ISSUE: NATURE, FORM, AND MEANING

---

This special issue was edited at the Department of Landscape Architecture and Regional Planning, University of Pennsylvania and the Department of Landscape Architecture, University of Wisconsin–Madison, with assistance provided by the School of Environmental Design, University of Georgia. It was supported, in part, by a grant from the National Endowment for the Arts.

---

Guest Editor  
Editorial Consultant  
NEA Grant Liaison  
Editorial Assistants

Anne Whiston Spirn, University of Pennsylvania  
Arnold Alanen, University of Wisconsin–Madison  
Darrel Morrison, University of Georgia  
Susan Haswell, University of Wisconsin–Madison  
Signe Holtz, University of Wisconsin–Madison  
Jennifer Lee, University of Pennsylvania  
John Gilbert Widrick, University of Pennsylvania

Guest Editorial Board

Garrett Eckbo, *Berkeley, California*  
Susan Rademacher Frey, *Louisville, Kentucky*  
Kenneth Helphand, *University of Oregon*  
Reuben Rainey, *University of Virginia*  
Joseph Rykwert, *University of Pennsylvania*  
Susanne Louise Turner, *Louisiana State University*

---

Grateful acknowledgement is made for permission to reprint the following:

“The Dry Salvages,” in *Four Quartets*, Copyright 1943 by T. S. Eliot; renewed 1971 by Esme Valerie Eliot. Reprinted by permission of Harcourt Brace Jovanovich, Inc.

“Anecdote of the Jar,” Copyright 1923 and renewed 1951 by Wallace Stevens. Reprinted from *The Collected Poems of Wallace Stevens*, by permission of Alfred A. Knopf, Inc.

“The Isle of Innisfree,” in *The Collected Works of W. B. Yeats*. Copyright © 1933 by Macmillan. Copyright renewed © 1961 by Anne Yeats. Printed by permission of A.P. Watt Ltd.

Anthony Hecht, 1 stanza, “The Garden of the Villa d’ Este,” in *The Hard Hours*. Copyright © 1967 Anthony Hecht. Reprinted with the permission of Atheneum Publishers, an imprint of Macmillan Publishing Company.

Denise Levertov, “Silent Spring,” in *Oblique Prayers*. Copyright © 1984 by Denise Levertov. Reprinted by permission of New Directions Publishing Corporation.

From the book *The Sense of Wonder* by Rachel Carson. Copyright © 1956 by Rachel L. Carson. Copyright renewed © 1984 by Roger Christie. Reprinted by permission of Harper & Row, Publishers, Inc.

Acknowledgement is also made for material reprinted from:

Lawrence Durrell, “Landscape and Character.” *In Spirit of Place: Letters and Essays on Travel*. Allan G. Thomas, ed. New York: D. P. Dutton & Co., Inc., 1969, p. 161.

C. Lévi-Strauss. *Tristes Tropiques*. Translated by John Russell. New York: Criterion Books, 1969, p. 127.

---