

---

# LANDSCAPE JOURNAL

---

Design, planning and management of the land

*Volume 9, Number 2, Fall 1990*

---



---

# LANDSCAPE JOURNAL

---

Design, planning and management of the land

---

*Volume 9, Number 2, Fall 1990*

---

---

THE  
UNIVERSITY  
OF  
WISCONSIN  
PRESS

---

---

# LANDSCAPE JOURNAL

---

Design, planning and management of the land

---

Edited at the Department of Landscape Architecture, University of Illinois and the Department of Landscape Architecture, University of Wisconsin-Madison in cooperation with the Council of Educators in Landscape Architecture (CELA), and published by the University of Wisconsin Press.

---

Editor  
Consulting Editor  
Book Review Editor

Robert B. Riley, *University of Illinois-Urbana Champaign*  
Arnold Alanen, *University of Wisconsin-Madison*  
Noël Dorsey Vernon, *Ball State University*

Editorial Board

Clare Cooper-Marcus, *University of California-Berkeley*  
Peter Jacobs, *University of Montreal*  
Grant Jones, *Jones and Jones, Seattle, Washington*  
Robert Leopold, *Bureau of Land Management, Denver*  
Michael M. McCarthy, *Texas A & M University*  
Darrel Morrison, *University of Georgia*  
Frederick Steiner, *Arizona State University*  
Joanne M. Westphal, *Michigan State University*  
Ervin Zube, *University of Arizona*

Ex officio

Margaret McAvin, *President, Council of Educators in Landscape Architecture*  
William Swain, *Fellow, American Society of Landscape Architects*

---

**EDITORIAL OFFICE:** Department of Landscape Architecture, University of Illinois, Urbana, Illinois 61801. The editors invite the submission of manuscripts reporting results of research and scholarly investigation relating to landscape design, planning, and management. Submission of a paper to *Landscape Journal* implies that it has neither been published elsewhere nor is under consideration by another periodical. For complete guidelines regarding preparation of manuscripts and illustrations, contact the editors at the editorial office address. Enclose a self-addressed, stamped envelope.

**BUSINESS OFFICE:** All correspondence about advertising, subscriptions, and allied matters should be sent to: Journal Division, The University of Wisconsin Press, 114 N. Murray St., Madison, WI 53715.

LANDSCAPE JOURNAL is published twice yearly by the University of Wisconsin Press.

© 1990 by the Board of Regents of the University of Wisconsin System.

Authorization to photocopy items for internal or personal use, or the internal or personal use of specific clients, is granted by the Board of Regents of the University of Wisconsin System for libraries and other users registered with the Copyright Clearance Center (CCC) Transactional Reporting Service, provided that the base fee of \$1.50 per copy is paid directly to CCC, 21 Congress St., Salem, MA 01970. 0277-2426/84/0003-091 \$1.50/0

Postage paid at Madison, Wisconsin, and at additional mailing offices.

**SUBSCRIPTION RATE:** One year: \$40.00 businesses, libraries, government agencies, and public institutions; \$18.00 individuals (individuals must prepay); foreign subscribers (including Canada and Mexico) add \$8.00 per year or for Air Mail Service add \$11.00 per year.

US ISSN 0277-2426

---

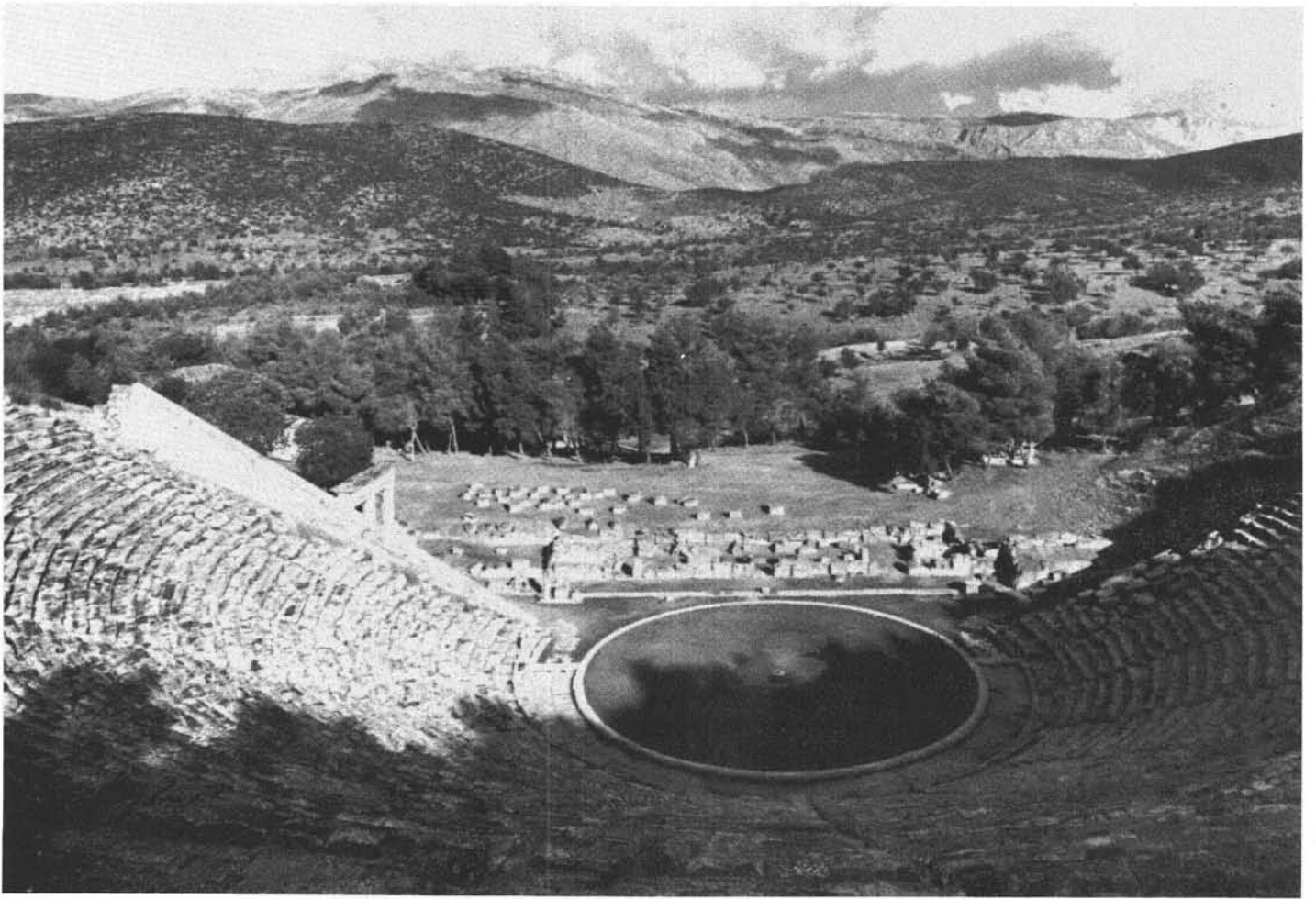


Figure 1. Theater at Epidauros, Greece. The Greek *Theatron* shares an etymological root with *theos*, or *theoria*. It was conceived as the stage upon which divine events in the cosmos were theoretically enacted and made manifest. Photograph by Susan Jellicoe. Taken from *The Landscape of Man*, by Geoffrey and Susan Jellicoe. London: Thames and Hudson. 1975. pp. 123.